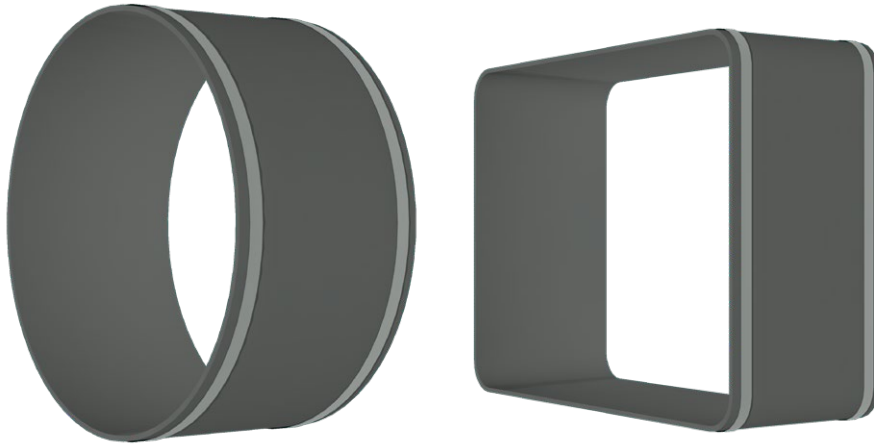
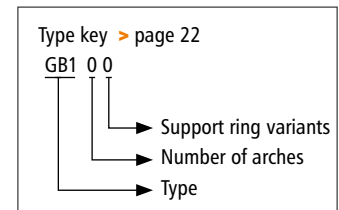


GB100



> Type GB100



Belt expansion joint without arch

Design:	Straight or conical elastomer or multilayer expansion joint with sleeves for clamped fixing, ideally only for round or oval duct cross sections Optional expansion joint with installation seam
Installation method:	Clamped fixing at duct level
Dimensions:	For round and oval duct cross sections of up to approx. Ø 1,500 mm
Installation length:	= Installation gap + 2x fixing width Individually according to customer specifications
Fixing width:	Depends on pressure, diameter and clamp design at least 40 mm
Media temperature:	Suitable for up to 400 °C
Pressure:	Up to ±0.25 bar Higher pressures on request
Movement:	For axial, lateral and angular movements Benchmarks: axial compression = approx. 0.20 x installation gap axial extension = approx. 0.20 x installation gap lateral displacement = approx. 0.15 x installation gap In the event of axial extension and simultaneous lateral displacement, movements are reduced In the event of axial extension or vacuum, the expansion joint can be pulled from the pipeline (provide groove at end of pipeline if needed) For large lateral movements, we recommend presetting the duct against the direction of movement

Application:
Power plants, waste incineration plants, gas turbines, cement factories, paper industry, steel industry e. g. in exhaust pipes, in ventilators, in air ducts, in ash lines, in filter systems



Request assembly instructions at:
www.ditec-adam.de/en/contact

Expansion joint variants

	Elastomer expansion joint	Multilayer expansion joint
Temperature:	up to 200 °C	up to 400 °C
Design:	Single-layer elastomer expansion joint fully joined with one or more fabric reinforcement inserts	Multilayer fabric expansion joint consisting of interior insulating layers, embedded sealing films and exterior pressure carrier fabrics.
Material:	<p>Rubber grades: up to 100 °C: EPDM, IIR, CSM, NBR up to 180 °C: FPM up to 200 °C: Silicon (Q)</p> <p>PTFE lining: Permanently embedded on the inside at the rubber bellows in order to withstand corrosive chemical attack, available starting at Ø 300 mm</p> <p>Inserts: Polyamid, polyester, aramide, glass fibre, and steel mesh</p>	<p>Internal layers: PTFE glass fibre fabric laminate, glass fibre fabric, glass mat, silicate fabric</p> <p>Sealing films: PTFE film, stainless steel film</p> <p>External layer: Silicon coated glass fibre fabric PTFE-glass fibre fabric laminate</p>

Fastening clamps

Design:	Depending on pressure and diameter, endless clamp belt or hinge bolt clamps At higher pressures, 2 parallel clamps per side	
Width:	Endless clamp belt: ¾" Hinge bolt clamp: depending on Ø: 18–30 mm	
Materials:	Endless clamp belt with screw lugs (tongs):	1.7300
	Hinge bolt clamp, belt and housing:	1.4016 (Screw steel galvanised)

Optional accessories

Installation set:	Tools and aids for punching and closing the expansion joint seam
--------------------------	--

Cross section GB100

